



FCI DOG SHOWS  
**USER'S GUIDE**



Brief code of conduct for exhibitors, judges and staff at a dog show





## FCI DOG SHOWS USER'S GUIDE

\* **Arrive to the showground with time enough** to pass any veterinary or access controls, avoiding crowds in the car park or at the entrance of the show, being able to **walk or exercise your dog** after the trip to adapts properly to the place.

*\*Judges, ring stewards and organization staff must always be punctual and be prepared to comply with the established schedules.*







## FCI DOG SHOWS USER'S GUIDE

**\*Check** the location of the rings and the judging schedule, to be at the ring door with **time enough** and to avoid being declared “Absent”

\*Try to always **leave free the accesses** to the showground and rings, helping all exhibitors to circulate without problems, not affecting the development of the show.

**\*The stewards, assistants, judges and organization staff are here to help you.**

**Pay attention to their instructions** as well as the information provided in writing or by public address system during the development of the event.

Brief code of conduct for exhibitors, judges and staff at a dog show

**\*A dog show is, above all, a celebration** of the purebred dog and everyone who participates in or visits it deserves to be treated **politely, with tolerance and respect.**

*\*Exhibitors deserve kind treatment from judges, stewards and staff, being aware that on many occasions their nerves are on edge.*





## FCI DOG SHOWS USER'S GUIDE

\***Appropriate clothing and grooming** are required of all those who participate in a dog show.

\*The ring is a space **free of alcohol, tobacco and food** during the development of the show.

\***Never leave your dog unattended,** nor let it disturb others with its barking, howling or growling.

*\*Any case of neglect or mistreatment of a dog cannot be tolerated and must be immediately brought to the attention of whoever is appropriate.*







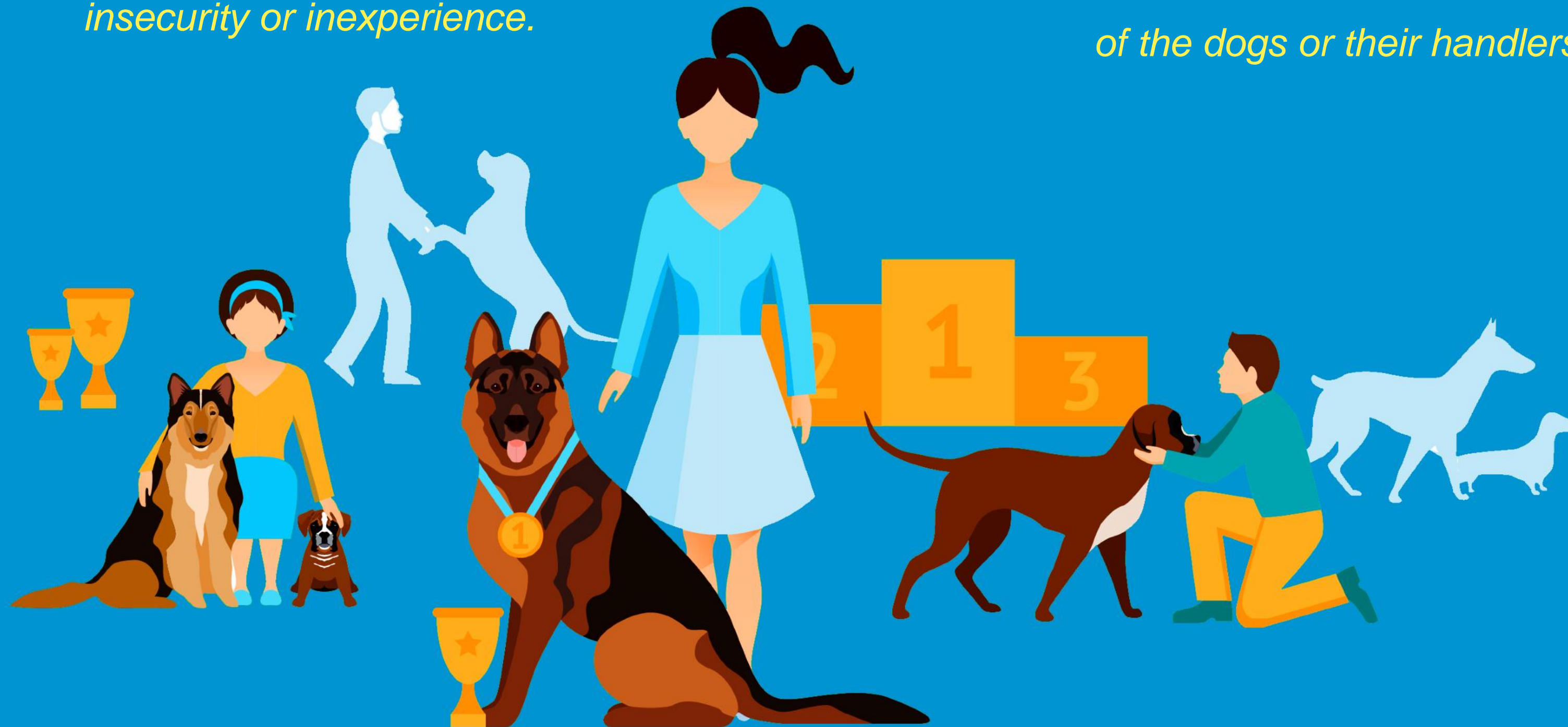
## FCI DOG SHOWS USER'S GUIDE

\*Inside the ring you must show **sportsmanship and fair play** with the others.

*\*It's very important to treat all exhibitors and their dogs equally, paying special attention to those that show insecurity or inexperience.*

\*It's important to **avoid loud comments** about the appearance, movement or behavior of other participants or their dogs.

*\*No judge or ring staff should loudly criticize the appearance, behavior or movement of the dogs or their handlers.*





## FCI DOG SHOWS USER'S GUIDE

\*Talking and debating about the dogs participating in the show is fine, as long as it's done **politely**, **with constructive interest** and avoiding being hurtful or making malicious comments.

*\* If an exhibitor asks politely and the judge agrees, his questions can be answered or the decisions explained in more detail, always at the end and without interrupting the judging.*

\*Ring staff are working and **should not be interrupted** with irrelevant conversations.

*\*Avoid starting conversations, answering calls or being absent from the ring without reason and interrupting the development of judging.*



**\*Sportsmanship** in the ring includes paying attention to our dog, without trying to attract or distract that of others.

*\*Treat all dogs equally, as if they were the only one present, regardless of their quality or preparation.*





## FCI DOG SHOWS USER'S GUIDE

**\*Don't inappropriately criticize** the judge's decision or procedure, **nor openly show displeasure** or disagreement when you receive a qualification different from what was expected.

**\*Avoid showing open or obvious dislike** towards a dog or any of its characteristics, or towards the person showing it.



\*It is important to **take care** of the spaces we use and **leave everything the same** or better than when we arrived, both at the exhibition site and in the hotel or accommodation where we are and in the city we visit.  
**This way we will always be welcome.**

*\*Always thank the exhibitors for their participation and sportsmanship and the ring staff for their invaluable help in the development of the show.*

