



Breed:  
**THE PERUVIAN  
HAIRLESS DOG**

---

FCI-Standard N° 310

13.08.2013 / EN





## Brief historical summary

---



The Peruvian hairless dog, known as “*viringo*”, because of its particular nature, was the subject of obvious curiosity by the Peruvians from different times. Because of the allocation of different properties, they are seen on ceramics of different cultures pre-Incas like Vicus, Mochica, Chancay, Chancay with Tiahuanaco influence, Chimu and others where in many cases the hairless dog has replaced the puma, the snake or the hawk, standing with the greatest interest in the Chancay culture. As seen in these illustrations, the hairless dog makes its appearance in the archaeological periods of Pre-Inca times, from 300 BC until 1460 AD.



## General appearance

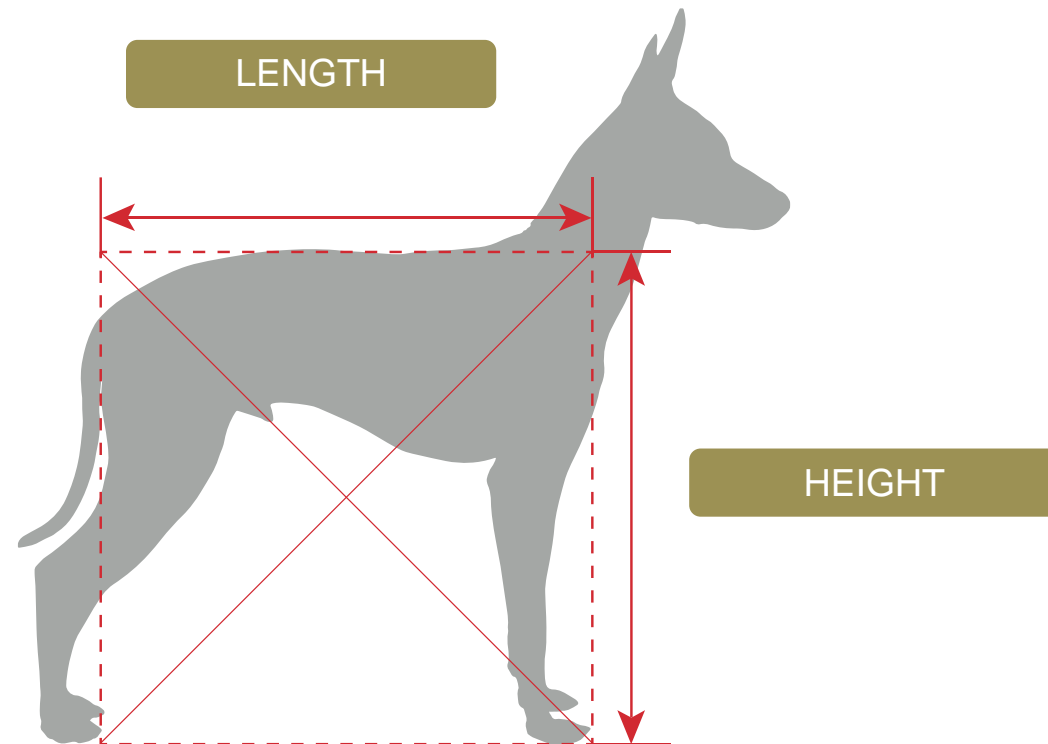
In general terms, the Peruvian hairless dog can be described as a slender and elegant animal, with a physique that implies speed, strength and harmony, with no hint of coarseness.

Two varieties exist: the hairless dog, the main characteristic of which is the absence of a coat; and the coated variety, completely covered in hair over its entire body. The hairless variety also tends to possess an incomplete set of teeth. This is a genetic factor associated with its congenital alopecia.



## Important proportions

The relationship between height at the withers and body length is 1:1, although the body of the female can be a little longer than that of the male.





## Behaviour / Temperament



---

Noble and affectionate at home with those close to him, at the same time lively and alert; he might be wary of strangers and is a good watch dog.

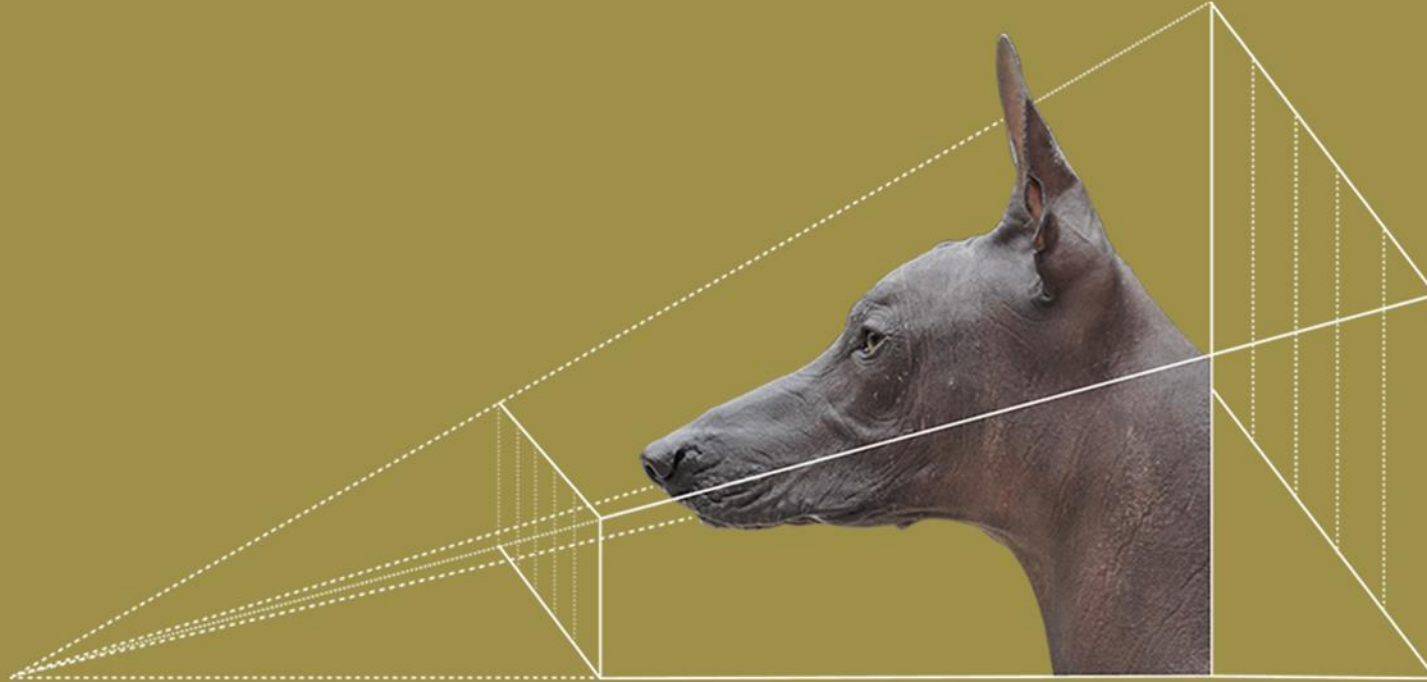


# Head

Of lupoid conformation.

01.  
Cranial Region

02.  
Facial Region

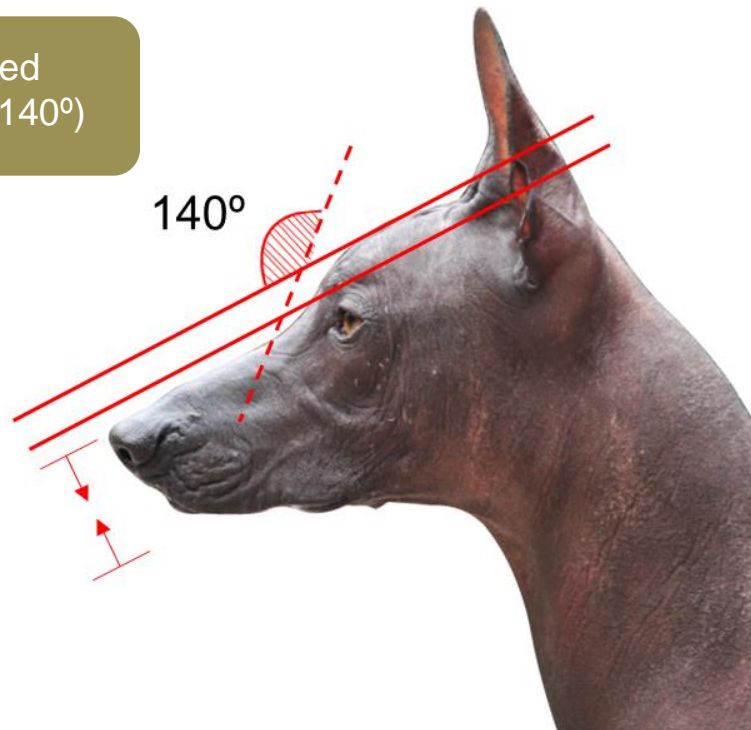


# 01. Cranial Region

## Skull

Mesocephalic. Orthoid, i.e. the upper axes of the skull and muzzle are parallel; a slight divergence is accepted. Seen from above, the skull is broad and the head tapers toward the nose. The superciliary arches are moderately developed. The occipital protuberance is barely marked.

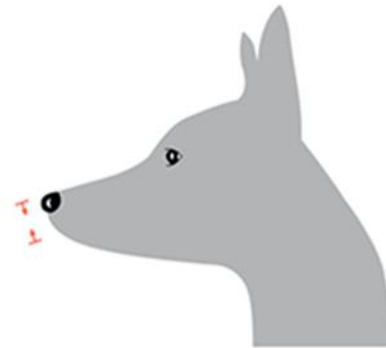
Slightly marked  
(Approximately 140°)



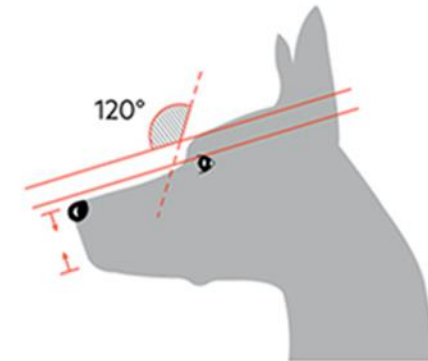
# 01. Cranial Region

**Stop:** Slightly marked (approximately 140°).

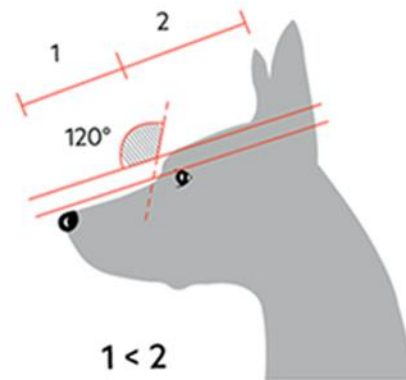
## INCORRECT STOP



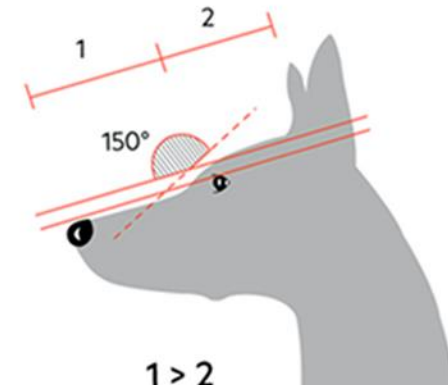
WEAK MUZZLE



TOO SHORT MUZZLE,  
NOTICEABLE STOP



TOO SHORT MUZZLE,  
NOTICEABLE STOP



TOO LONG MUZZLE,  
UNNOTICEABLE STOP





## 02. Facial region



### Nose

---

Good pigmentation, the colour of the nose must be in harmony with the different colours of the skin; in the different shades in the hairless variety and with the colour of the hair in the coated variety.



## 02. Facial region

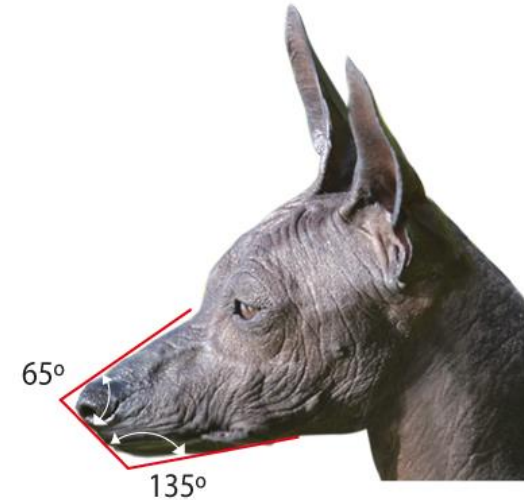
### Muzzle

Seen in profile, the nasal bridge is straight.

STRAIGHT  
SUPERIOR LINE



APPROXIMATELY  
MUZZLE'S ANGLES



## 02. Facial region

### Lips

They must be as tight as possible and close to the gums.





## 02. Facial region



### Jaws / Teeth

The incisors should fit in scissor bite. In the hairless variety the absence of one or more teeth is accepted. In the coated variety the dentition must be complete with teeth normally developed and in a normal position. The jaw is not strongly developed.

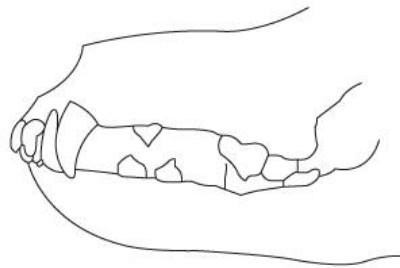




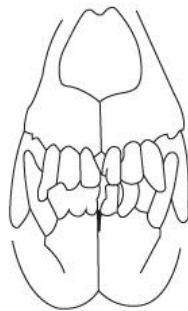
# 02. Facial region

## Jaws / Teeth

CORRECT BITE

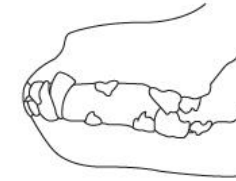


Scissor bite

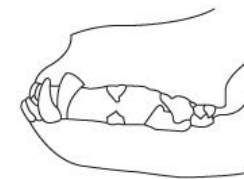


INCORRECT BITE

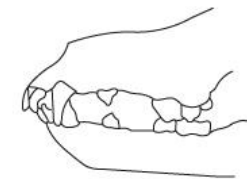
Level bite



Undershot bite



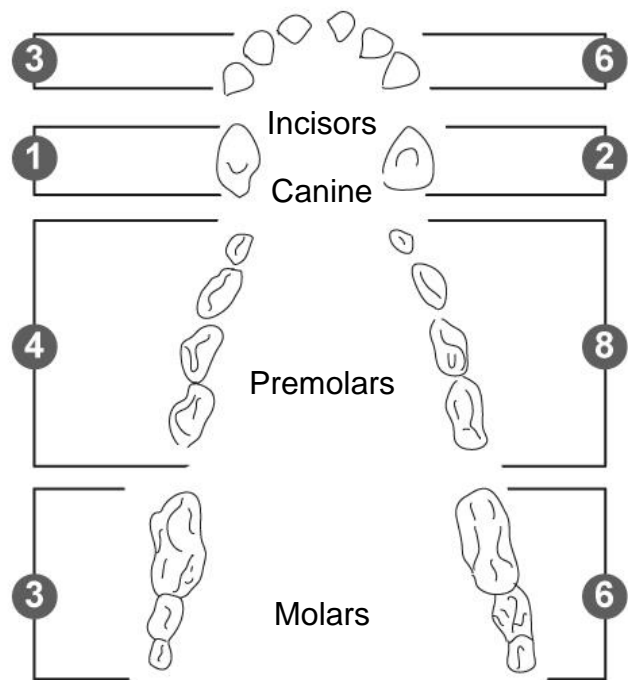
Overshot bite



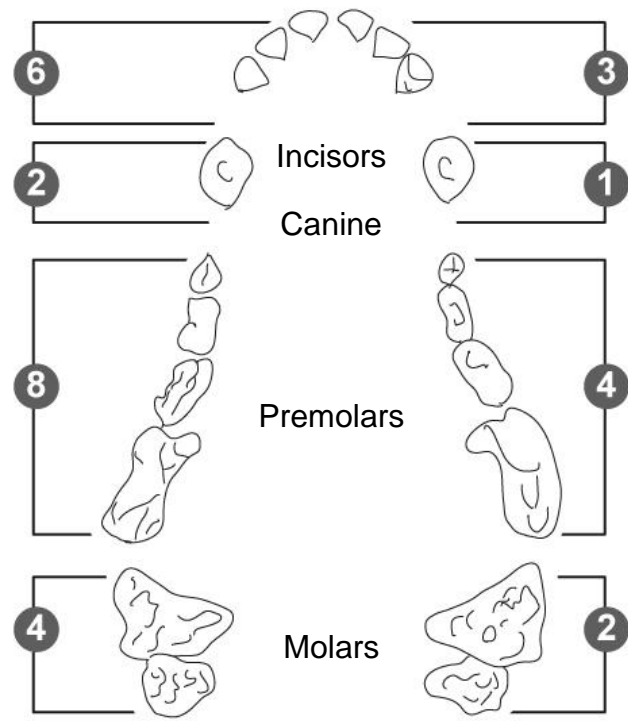
# 02. Facial region

## Jaws / Teeth

LOWER TEETH



UPPER TEETH



Dental composition of coated variety



## 02. Facial region



### Cheeks

---

Developed without exaggeration.

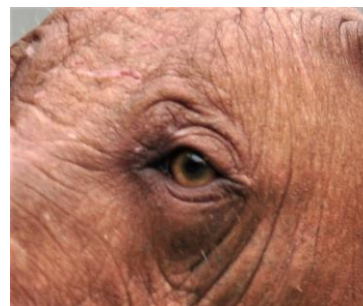
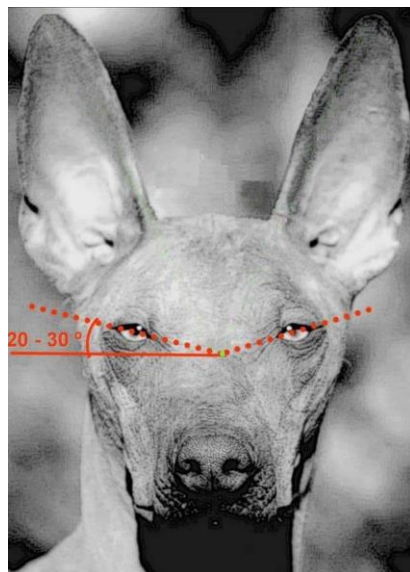


## 02. Facial region

### Eyes

Alert and intelligent expression. The eyes must be of average dimensions, slightly almond shaped, neither deep-set nor prominent, normally and regularly placed, i.e. neither too close together nor too wide apart. The colour can vary from black, going through all shades of brown to yellow, in harmony with the skin colour in the naked variety and with the coat in the variety with hair. In any case, both eyes must be of the same colour.

The colour of the eyelids may go from black to pink in subjects with light coloured face. The light pink colours are admitted but not sought after.

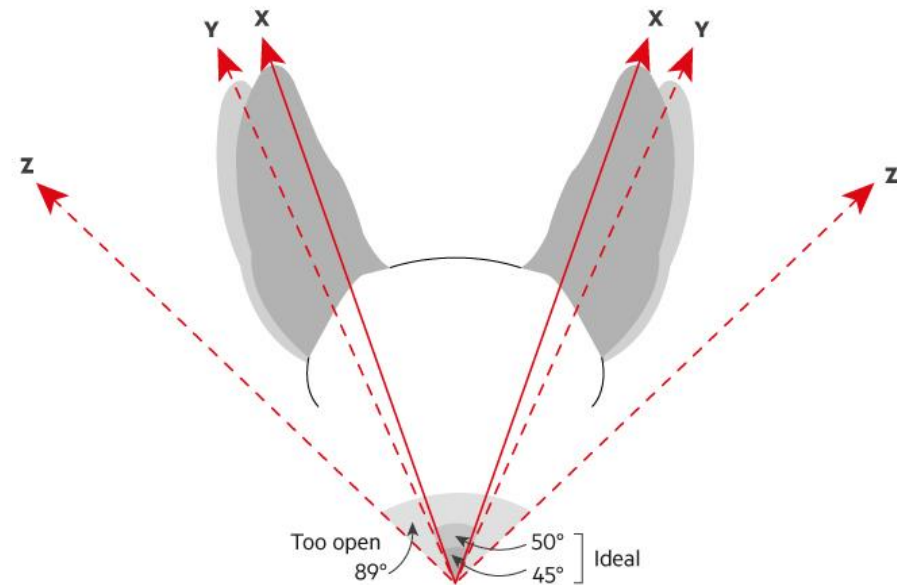




## 02. Facial region

### Ears

The ears must be pricked when the dog is attentive, whereas at rest, they are laid towards the back. The ears are of medium length; broad at the base, tapering progressively towards the tip, ending almost pointed. The ear set starts on the upper part of the skull to end laterally and obliquely. In erect position, the axes of the ears form a variable angle from  $50^\circ$  to near  $90^\circ$ .



X and Y axes form an Isosceles triangle with the tip of the nose.



## Correct Head

FRONT AND LATERAL VIEW



# Neck

**Upper profile:** Curved (convex).

**Length:** Approximately the same length as the head.

**Shape:** Near to a truncated cone shape, supple, with good musculature.

**Skin:** Fine, smooth, elastic and really close to the subcutaneous tissues. No dewlap.

CORRECT



SHORT



SWAN



LONG







## Body

Mesomorphic

01.  
Topline

02.  
Withers

03.  
Back

04.  
Loin

05.  
Croup

06.  
Chest

07.  
Underline and  
belly



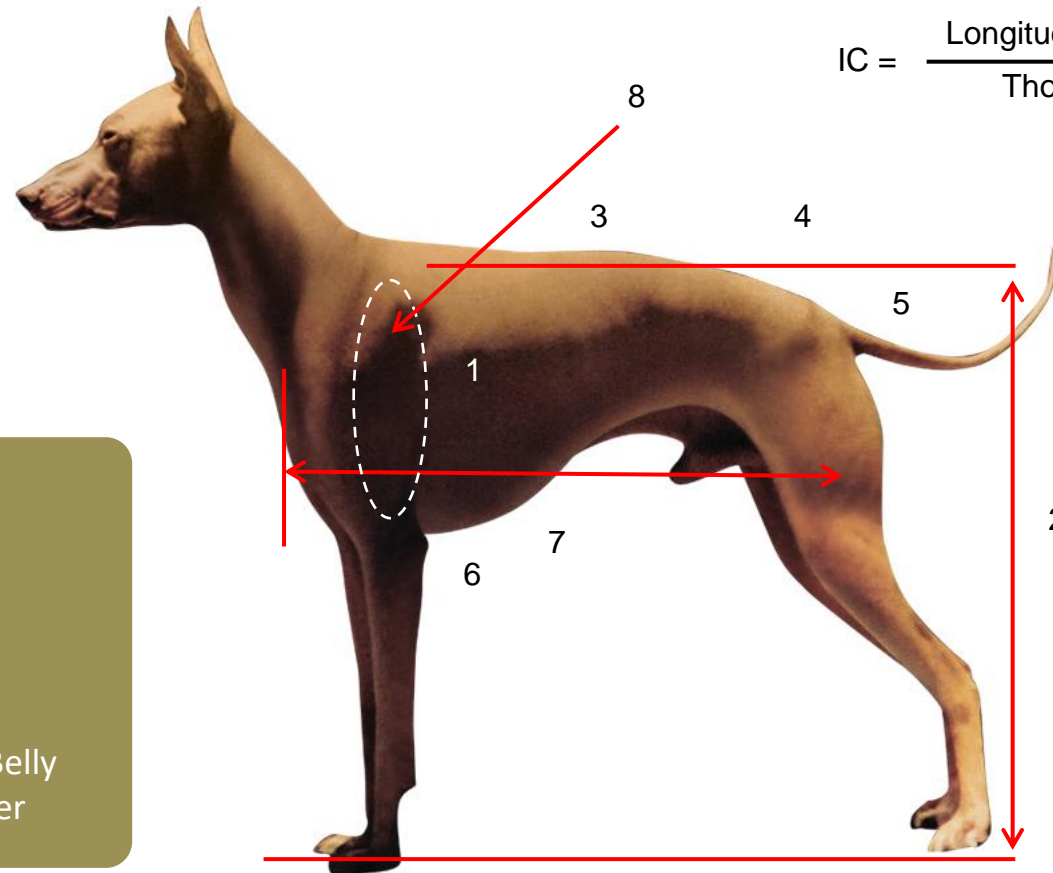


# Body

## Mesomorphic

The Peruvian hairless dog is defined as mesomorphic in accordance with accepted body index classification.

$$IC = \frac{\text{Longitudinal trunk axis} \times 100}{\text{Thoracic Perimeter}}$$



1. Thoracic Length
2. Withers
3. Back
4. Loin
5. Group
6. Chest
- 7- Bottom profile/ Belly
8. Thoracic perimeter

**Mesomorphs** have a body index of between 71 and 84.

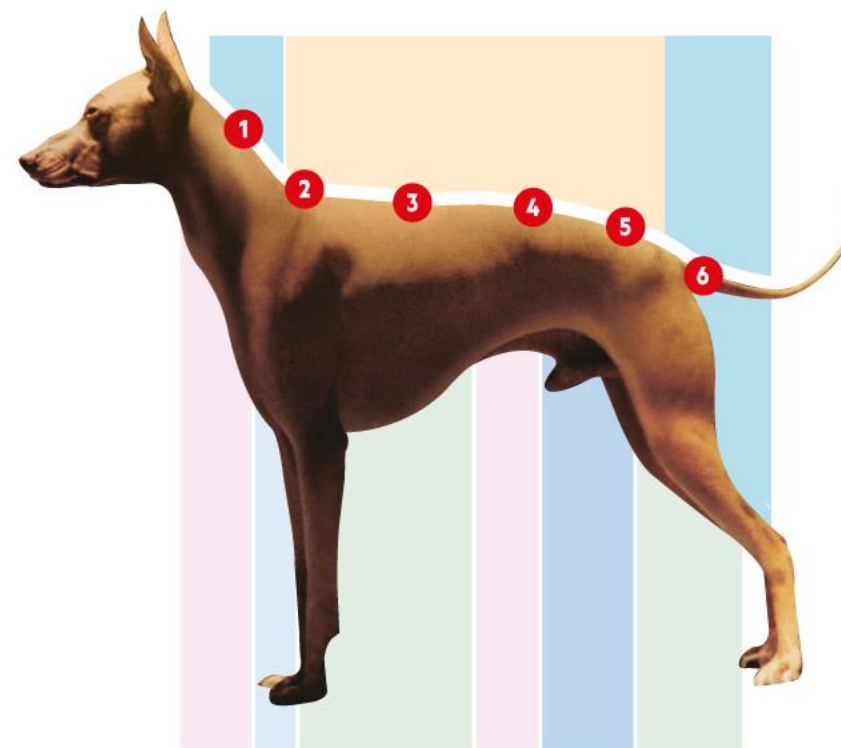


# Body



## Topline

Level, although certain subjects show a dorsal-lumbar convexity, which disappears at croup level.



- 1 Neck
- 2 Withers
- 3 Back
- 4 Loin
- 5 Croup
- 6 Tail

# Body

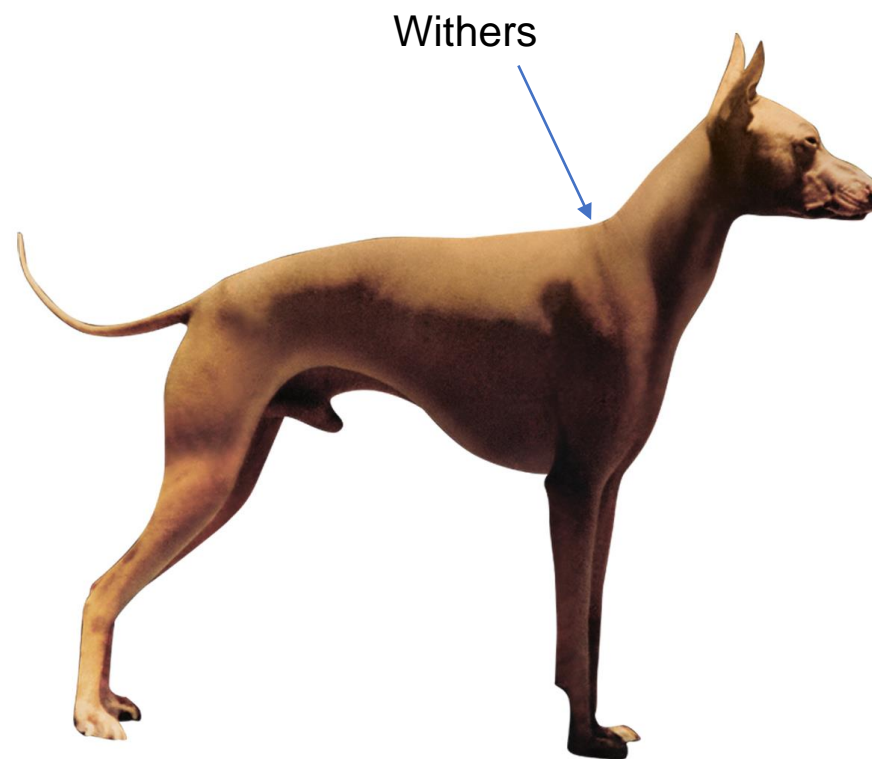
---



## Withers

---

Barely accentuated.





# Body

## Back

Straight, with well-developed back muscles often forming all along the back a muscular bi-convexity, which extends to the lumbar region.

## Loin

Strong and well-muscled. Its length reaches approximately 1/5 of the height at the withers.

## Croup

The superior profile is slightly convex, slanting approximately 40° to the horizontal. Solid and well-muscled giving a good push.



# Body



## Chest

---

Seen from the front, the chest perimeter must have good amplitude, but without excess; reaching almost to the elbow. The ribs must be slightly sprung, never flat. The chest, measured behind the elbows, must exceed the height at the withers with approximately 18%.

## Underline and belly

The lower profile presents an elegant and well-marked line which goes from the lower part of the chest and rising to the belly which must be well tucked up, but without excess.



# Tail

The tail is set on low, thick at the root it tapers towards the tip. When excited, the dog can carry the tail raised in a loose curve above the backline, but never as curved as being rolled up. At rest, it hangs with a slight upward curve at the tip. The tail is sometimes carried tucked in towards the abdomen. In length it almost reaches the hock. Tail to be complete.





# Limbs

01.  
Forequarters

02.  
Hindquarters



# Limbs

## 01.

### Forequarters

Well united with the body, seen from the front they are perfectly upright with the elbows not turned out. The angle at the shoulder/upper arm varies between 100° and 120°. Seen in profile, the angle is 15° to 20°.

**Forefeet:** Are semi-long and look like hare-feet. The pads are strong and heat-resistant. The inter-digital membranes are well developed. The black dogs have preferably black nails and the lighter coloured dogs light nails.

#### TYPES OF FOREFEET



Correct



Open



Correct



Weak



# Limbs

## 01.

### Forequarters



INWARD



TIGHT ELBOWS



CORRECT



TURNED OUT



ELBOWS OUT



TOO WIDE





# Limbs

## 02.

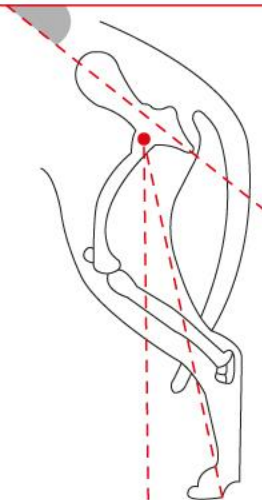
### Hindquarters

The muscles are rounded and elastic. The curve of the buttocks is well marked. The coxo-femoral angle varies between 120° and 130°. The femoro-tibial angle must be of 140°. Seen from behind the hindquarters must be upright.

**Hind feet:** Same as forefeet.

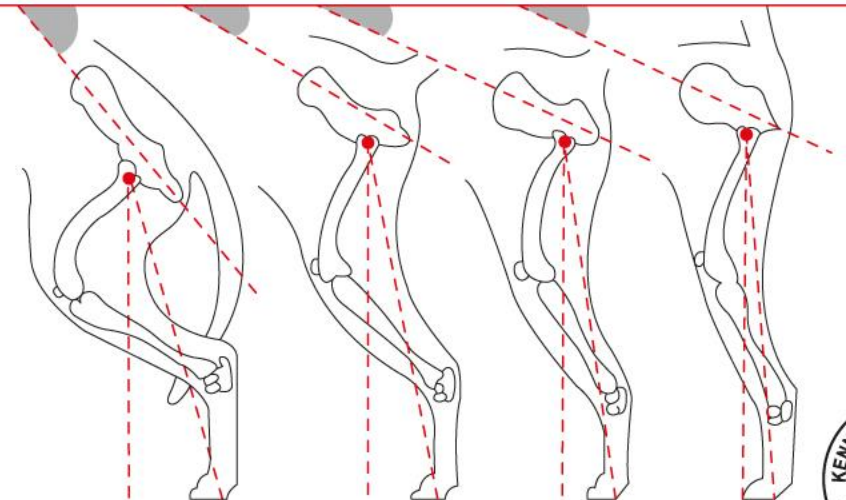
CORRECT COXO-FEMORAL ANGLE

CROUP INCLINATION: 40°



INCORRECT COXO-FEMORAL ANGLE

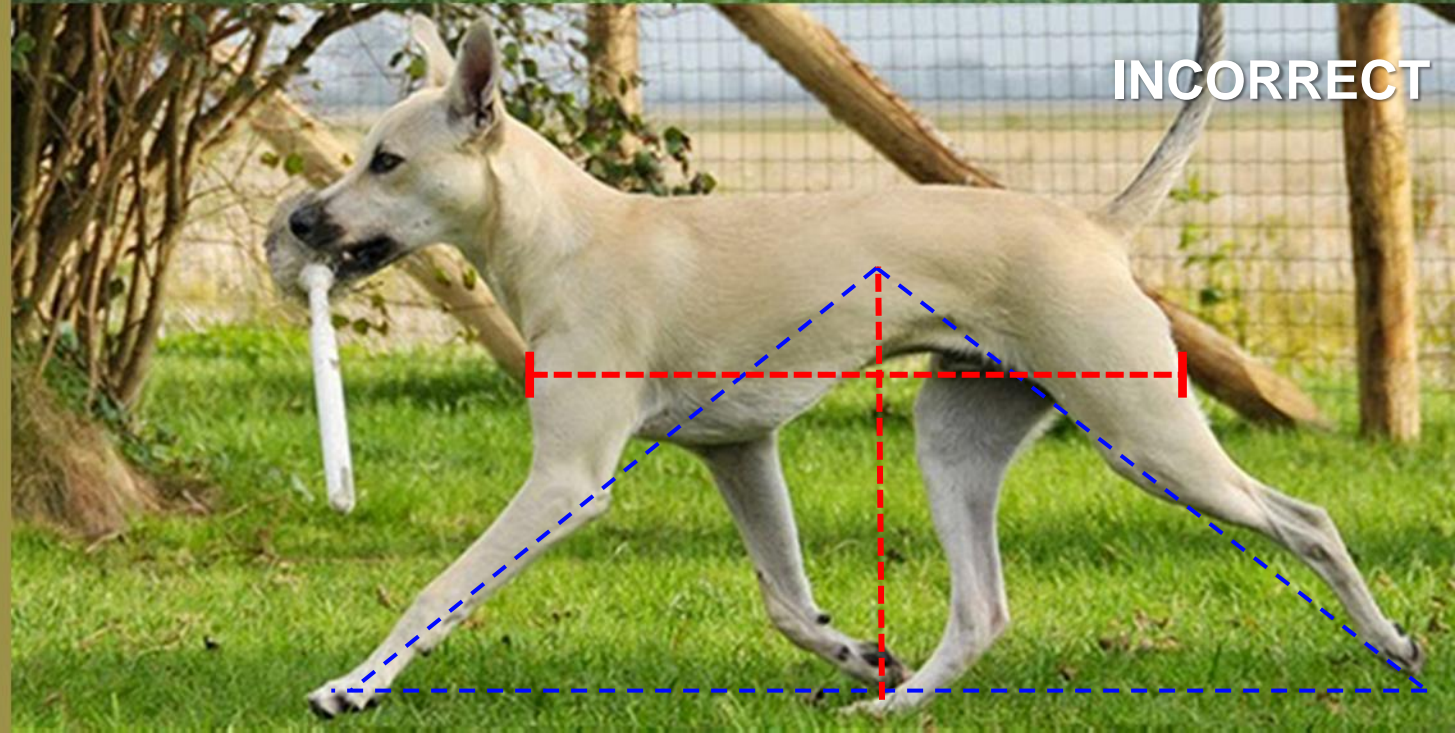
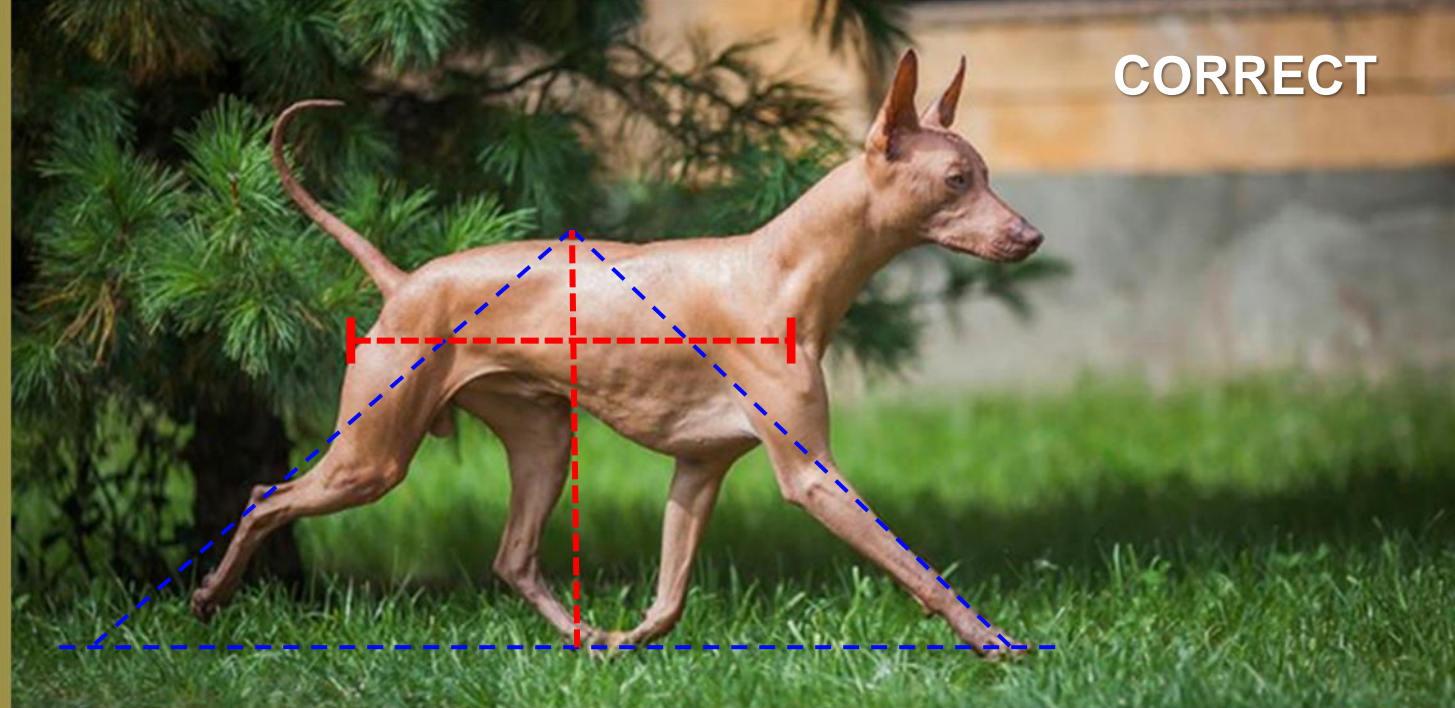
50° 30° 25° 20°



# Gait / Movement

Due to the angulations defined at the description of the limbs, some of these dogs move with shorter steps but faster and at the same time quite soft and flexible.

The limbs, seen from front or behind must move in a single line (i.e. single tracking).





# Skin

The skin must be smooth and elastic all over the body, but can form a few rounded almost concentric lines on the head and round the eyes and the cheeks in the hairless variety.

It has been verified that the internal and external temperature of the hairless dogs is exactly the same as that of other breeds (coated or not). The absence of hair leads to an immediate and direct emanation of heat, different from the coated subjects, where the heat filters through the coat by natural ventilation.





# Coat

**Hairless variety:** Without hair, only very few hairs on the head and at the extremities of the legs and the tail are admitted, and sometimes sparse hair on the back. These hairs can be any colour or combination of colours.

**Coated variety:** Smooth, short and tight coat. The hair can be any colour or combination of colours.



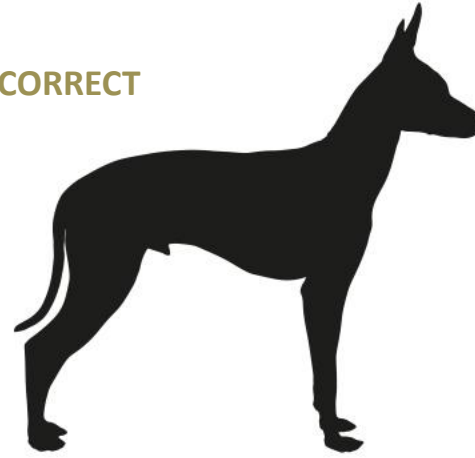
# Colour

The colour of the skin in the hairless variety can vary from black, slate black, elephant black, bluish black, the whole scale of greys (diluted black), bronze, copper, dark brown going to light blond.

All colours can be either uniform or show depigmented areas in any part of the body, preferable on the chest, legs and tail, nevertheless, the extension should not be more than 20% of all the skin. In equal conditions it is preferred solid colours.

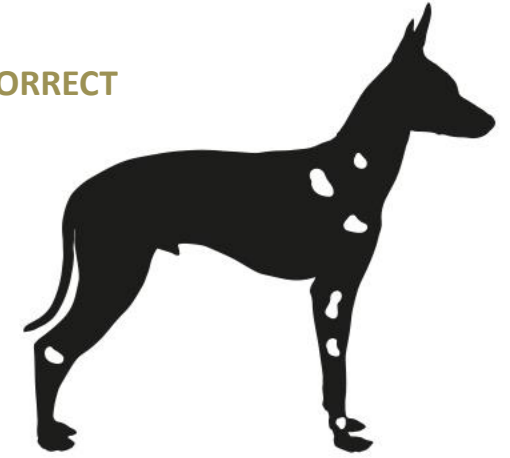
## Hairless variety

CORRECT



SOLID COLOUR

CORRECT



DEPIGMENTED AREAS LESS THAN 20% OF THE SKIN

DISQUALIFYING



DEPIGMENTED AREAS MORE THAN 20% OF THE SKIN

DISQUALIFYING



DEPIGMENTED DOG



# Colour

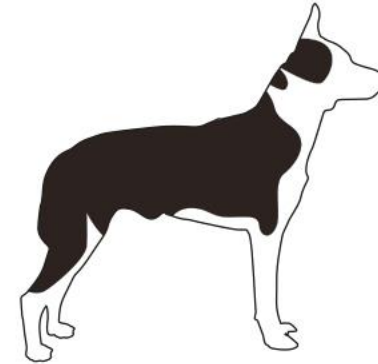
The colour of the skin in the hairless variety can vary from black, slate black, elephant black, bluish black, the whole scale of greys (diluted black), bronze, copper, dark brown going to light blond.

All colours can be either uniform or show depigmented areas in any part of the body, preferable on the chest, legs and tail, nevertheless, the extension should not be more than 20% of all the skin. In equal conditions it is preferred solid colours.

## Examples of coated variety colours



SOLID / UNICOLOUR



BICOLOUR



TRICOLOR



FAWN



AGOUTI







## Size

There are three sizes in the males and females.



**SMALL**

25 - 40 cms.



**MEDIUM**

41 - 50 cms.



**LARGE**

51 - 65 cms.





# Weight

The weight is in relation to the size.

**Small:** 4 - 8 kg. Aprox. 8.8 - 17.6 pounds.

**Medium:** 8 - 12 kg. Aprox. 17.6 - 26.4 pounds.

**Large:** 12 - 25 kg. Aprox. 26.4 - 55.1 pounds.







## Faults

Any departure from the foregoing points should be considered a fault and the seriousness with which the fault should be regarded should be in exact proportion to its degree and its effect upon the health and welfare of the dog.





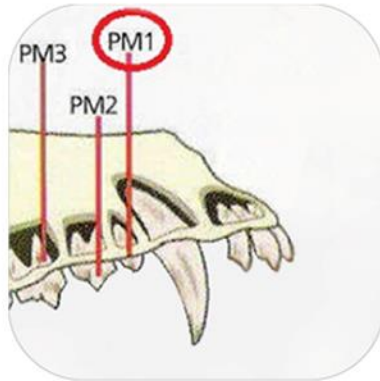
# Faults



SEMI-ERECT EARS,  
ONE OR BOTH



PINCER BITE



ABSENCE OF ONE PM1  
IN THE COATED VARIETY



PRESENCE OF  
DEWCLAWS





## Disqualifying faults





# Disqualifying faults

- AGGRESSIVE OR OVERLY SHY DOGS.
- ANY DOG CLEARLY SHOWING PHYSICAL OR BEHAVIOURAL ABNORMALITIES SHALL BE DISQUALIFIED.



OVER OR  
UNDERSHOT BITE.



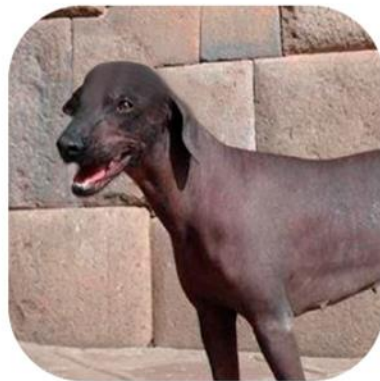
# Disqualifying faults



DEVIATED JAW (I.E. WRY MOUTH).



MORE THAN ONE TEETH MISSING IN THE COATED VARIETY.



HANGING OR CROPPED EARS.



TONGUE NORMALLY HANGING OUTSIDE OF THE MOUTH (PARALYZED).



# Disqualifying faults



EYES OF DIFFERENT COLOUR  
(HETEROCHROMATIC).



TAIL-LESS, SHORT TAIL OR  
DOCKED TAIL.



PRESENCE OF HAIR IN THE HAIRLESS  
VARIETY ON PARTS OF THE BODY NOT  
INDICATED IN THE STANDARD.



MORE THAN 20% OF THE BODY  
IS DEPIGMENTED IN THE  
HAIRLESS VARIETY.



# Disqualifying faults



MERLE COAT COLOUR IN THE COATED VARIETY.



TOTAL OR PARTIAL DEPIGMENTED NOSE.



HEIGHT MORE THAN 65 CM AND LESS THAN 25 CM.



ALBINISM.





## N.B.

Male animals should have two apparently normal testicles fully descended into the scrotum.

Only functionally and clinically healthy dogs, with breed typical conformation.



# SPECIAL THANKS

Abel León  
Ermanno Maniero

## IMAGES / PHOTOGRAPHY:

Julio Aguilar  
Marisa La Rosa  
Valeria Kablova  
Carlos Ramírez





**THANK  
YOU**